



Media Release

SMU adds another sustainable building to its city campus

New integrative, seven-storey building is home to two Schools, four research centres and a research lab

Singapore, 28 October 2022 (Friday) – Singapore Management University (SMU) today officially launched a new seven-storey multi-use building that adds over 12,700 square metres of teaching, learning, research and faculty space to its footprint. The ceremony was officiated by Guest-of-Honour Mr Heng Swee Keat, Deputy Prime Minister and Coordinating Minister for Economic Policies, in the presence of 250 guests and SMU faculty, staff, students and alumni.

From architectural design to construction materials, methodology and building technology, the development pushes the bar higher in energy efficiency, indoor environmental quality and sustainable operations and management. In recognition, it achieved the prestigious Building and Construction Authority (BCA) Green Mark Platinum (Super Low Energy Building) award in 2020.

To lower the carbon footprint of the new building, Mass Engineered Timber (MET) with modular steel structures was used instead of the traditional reinforced concrete structure. Furthermore, the building adopts prefabricated modular timber façade panels and factory-assembled modular Mechanical Electrical Plumbing (MEP) systems. The building also boasts significant energy reduction through multiple 'green' features, including a rooftop solar farm to harness renewable energy. With the addition of this facility to the rest of SMU's existing rooftop solar farms, the University is now the largest solar power plant in Singapore's city centre. Guided by the University's Sustainability Blueprint, these proactive efforts illustrate SMU's commitment towards the highest industry standards in environmental sustainability.

As with the rest of the SMU campus, the project, which was constructed at a cost of approximately S\$100 million, was designed with the ethos of integration, openness and porosity in mind. Located next to the Yong Pung How School of Law and just across Fort Canning Park, the building provides yet another corridor for members of the public to access and enjoy the lush greenery and rich heritage of the Park. It also enables seamless sheltered connectivity (aboveground and underground) throughout the entire SMU campus, extending from the Bras Basah precinct to Fort Canning Park.

Across seven storeys, the building is home to the [School of Social Sciences](#) (SOSS), which is celebrating its 15th anniversary this year; and the [College of Integrative Studies](#) (CIS) established this year. The building also houses the [Wee Kim Wee Centre](#), the [Centre for Research on Successful Ageing](#), the [Lien Centre for Social Innovation](#), the [Secure Mobile Centre](#) and the [Research Lab for Intelligent Software Engineering](#).

Having grown significantly over the past 15 years, SOSS is now home to more than 800 undergraduate and postgraduate students, and 40 faculty members, a healthy increase since its inaugural intake of 76 Bachelor of Social Science students and 10 faculty members in 2004. The School now offers four majors and three second majors via a rigorous yet flexible curriculum, and has nurtured over 2,500 graduates, with many notable alumni among its graduates, including national athletes, change makers, entrepreneurs and social entrepreneurs.

The CIS, SMU's seventh school, was established earlier this year and is a strategic element of the University's [Vision 2025](#) of growing impact and transforming education. Playing a pivotal role in helping students traverse and integrate the disciplinary areas associated with the other SMU Schools – Accountancy, Business, Economics, Computing, Law and Social Sciences, CIS will nurture graduates who will find novel interdisciplinary solutions beyond traditional paradigms to contribute to industry and society in impactful ways.

SMU President, Professor Lily Kong, said, "The SMU campus is a very special one. It was designed, integrated and constructed in the heart of a fully developed cityscape. The growth of our campus footprint in this vibrant precinct and the addition of this sustainable building signals the strengthening of our roots here as a unique, global city university with ever stronger ties with our communities and stakeholders in the heart of Singapore."

"This new building encompasses hardware and software that are aligned to SMU's Vision 2025. It is a wonderful new addition to our campus, as our university continues to respond nimbly to a world of new challenges and opportunities. We are deeply grateful to be located in the heart of the city, and will continue to play our part in engagement and impact," she added.

- End -

Enclosures:

- Annex 1 - Sustainable features of the SOSS/CIS building
- Annex 2 - Key facilities and spaces in the SOSS/CIS building
- Annex 3 - SMU School of Social Sciences celebrates 15th Anniversary
- Annex 4 - About SMU College of Integrative Studies

About Singapore Management University

Established in 2000, Singapore Management University (SMU) is recognised for its disciplinary and multi-disciplinary research that address issues of global relevance, impacting business, government, and society. Its distinctive education, incorporating innovative experiential learning, aims to nurture global citizens, entrepreneurs and change agents. With more than 12,000 students, SMU offers a wide range of bachelors, masters and PhD degree programmes in the disciplinary areas associated with six of its eight schools - Accountancy, Business, Economics, Computing, Law and Social Sciences. Its seventh school, the SMU College of Integrative Studies, offers a bachelor's degree programme in deep, integrative interdisciplinary education. The College of Graduate Research Studies, SMU's eighth school, enhances integration and interdisciplinarity across the various SMU postgraduate research programmes that will enable our students to gain a holistic learning experience and well-grounded approach to their research. SMU also offers a growing number of executive development and continuing education programmes. Through its city campus, SMU focuses on making meaningful impact on Singapore and beyond through its partnerships with industry, policy makers and academic institutions. www.smu.edu.sg

Media Contact

Huang Peiling
Senior Assistant Director, Corporate Communications
SMU Office of Corporate Communications and Marketing
plhuang@smu.edu.sg | 9845-3361

Annex 1

Fact Sheet - Sustainability features of the SMU SOSS/CIS building

Many innovative 'green' features have been employed in the design and construction of the SOSS/CIS building, contributing to SMU's overarching sustainability goals, as articulated in the [SMU Sustainability Blueprint](#).

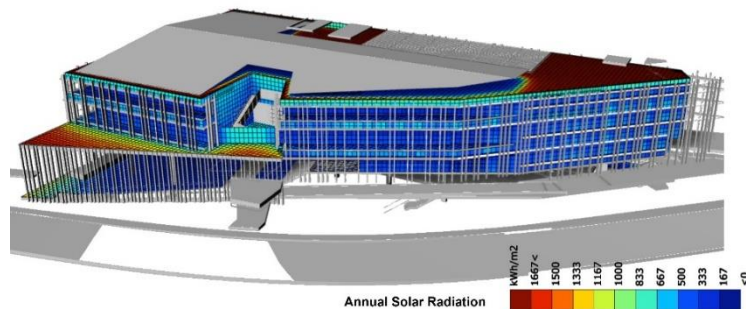
1. Architecturally expressive with passive self-shading features

The building has a self-shading building form and an external corridor layout, which enables the avoidance of direct radiant heat gain, and prevents visual discomfort. This improves thermal performance and reduces the reliance on artificial cooling systems. This in turn lowers the overall building energy consumption.

2. Excellent building envelope thermal performance with optimised window areas

To enable building users to connect with the outdoor nature of the neighbouring Fort Canning Park, the building's total window area is maximised to about 30% of the façade area, while maintaining optimal heat gain and achieving envelope thermal performance of 20.9 W/m².

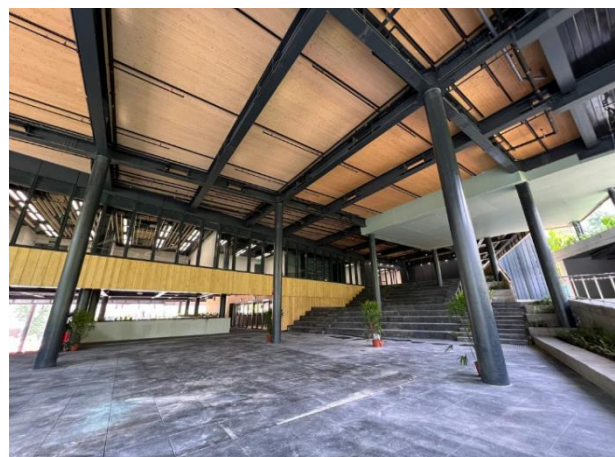
This is 45% better than BCA's Green Mark Super Low Energy Building (SLEB) requirement of 38 W/m² for Institutes of Higher Learning. Additionally, the building uses double-glazed glass and insulated timber walls to mitigate the transmission of external environment heat into the building's interior.



3. Sustainably sourced Mass Engineered Timber (MET) structure

The MET structure of the building employs sustainable construction material from responsible sources that reduces the embodied carbon of the building and its overall carbon footprint.

The use of CLT (Cross Laminated Timber) in the building has saved 16% (1,048,282 kgCO₂e) of embodied carbon, which is equivalent to the carbon that would have been emitted to produce electricity for over 570 HDB 4-room flats in one year (The factor used in the above computation is the average energy consumed by 4RM HDB flats, based on 2021 statistics from the Energy Market Authority).



4. Renewable energy – a roof-top solar farm



The building has a roof-rooftop solar farm that harnesses sunlight for renewable energy. The on-site 420 photo voltaic panels capacity of 170 kWp generates 220,440 kWh/year, which is equivalent to 12% of the total building energy consumption.

With this addition, the size of SMU's solar farm has grown and is now equivalent to 1.5 soccer fields. This has enhanced the generation capacity of renewable energy on the SMU campus to nearly 2MWp, meeting 12% of the campus' overall energy consumption.

5. Energy-efficient mini district cooling system

The building utilises chilled water from the existing Water-Cooled Chiller Plant located at the Yong Pung How School of Law. The chiller plant has an efficiency of 0.61 kW/RT and has helped to achieve a 32% improvement in the chiller plant's energy consumption over the Green Mark baseline.

6. Enhanced passive displacement cooling (EPDC) system

The entire SOSS/CIS building employs an innovative EPDC System, which does not consume power, to circulate the air in all the air-conditioned spaces. The air is circulated by a convection process that leverages the natural buoyancy of hot and cold air to significantly reduce energy requirements.



The large-scale deployment of the EPDC in this building follows successful implementation in the SMU Connexion, which is a BCA Green Mark Platinum (Zero Energy) Building. The system significantly contributes to the reduction of energy demands by the SOSS/CIS building, enabling it to operate at par with the BCA Green Mark Super (Platinum) Low Energy (SLE) standard.

7. Converged Power System

Instead of the conventional Uninterruptable Power Supply (UPS), the SOSS/CIS building uses a Converged Power System (CPS), which converges batteries for the Vac and Vdc system* into a single system to save space, and maintenance costs and reduces power losses.

**VAC refers to Volts Alternating Current; VDC refers to Volts of Direct Current. VDC output power supply is a simple AC-to-DC converter that has a power supply voltage of 110 or 220 VAC.*

8. Dynamic lighting for optimal reading

The SOSS/CIS building utilises natural daylight and adopts an array of other lighting features, such as dimming control, occupancy lux sensors and LED lighting to achieve significant energy savings. This integrated lighting control architecture helps to reduce energy consumption by 80%.

9. Responsive building control system

The building leverages a responsive control system with thermal and CO2 sensors to achieve optimum energy consumption without compromising occupants' thermal comfort.

10. Three-tick Water-Efficient Labelling Scheme (WELS) certified products

All bathroom fixtures, including the deck-mounted self-closing tap, wall-mounted angle stop valve, sensor basin tap, deck-mounted sink tap, and urinal flush valve, are WELS certified. This significantly reduces water usage by 30%.

Annex 2

Fact Sheet – Key facilities and spaces in the SOSS/CIS building

The SMU SOSS/CIS building adds over 12,700 sqm of purpose-built teaching, learning, research and faculty space across seven floors.




It serves as the final spot in the imperceptible connection between SMU School of Accountancy, SMU Connexion and SMU Yong Pung How School of Law, and enables seamless, sheltered connectivity from the Bras Basah precinct to Fort Canning Park. Nestled next to the Park, the project was conceptualised to not only to create connection between the buildings but to extend it to its users, nature, as well as the city in general.

Academic and administrative offices occupy the upper floors while teaching facilities (seminar rooms and classrooms) are located on the lower floors for easy access. There are also research offices in the building to support the University’s research programmes.

A key highlight of the SOSS/CIS building are the flexible and ubiquitous co-learning spaces that blur the boundaries between learning, resting and playing. This in turn fosters stronger bonds amongst the SMU community. All teaching facilities are equipped with the latest technologies to support optimal teaching and learning. The amenities in the faculty offices, administrative offices and meeting rooms are also designed to provide occupants with a conducive environment without compromising energy consumption, environmental friendliness and sustainable operation. Green Building Technologies, such as the smart control system and passive displacement cooling system, complement the overall sustainable design.

The comfortable and accessible collaborative study spaces are located in the proximity of teaching facilities for the convenience of students who transit between classroom sessions and out-of-classroom learning and discussions. Lounges and event spaces also encourage interaction between occupants. Pockets of greenery and a fresh colour palette have also been incorporated to add vibrancy to the environment.

Spaces and facilities	
1.	<p>Open Plaza (Level 2) The double-volume Open Plaza serves as an outdoor gathering space while remaining accessible to the public.</p> 

2. Student Lounge (Level 1)

The Student Lounge with high ceiling serves as an extensive informal learning zone, complementing formal learning spaces. Seating configurations and settings are flexible to cater for a variety of uses, such as coffee talks and focus group discussions. The space is equipped with F&B vending options, making it a buzzing student commons.

**3. Study areas (Levels 2 & 3)**

Extensive study areas located on levels 2 and 3 are designed to be learning spots and discussion spaces that support networking among students. Those study spaces which are located next to Seminar Rooms are fitted with white boards to facilitate active learning and student discussions, while also serving as rest zones while students wait for classes to begin.



4. **Seminar Rooms and Classrooms**

There are seven 50-seater Seminar Rooms and four 50-seater Classrooms, all equipped with the latest technologies to facilitate teaching and learning.

(Seminar Room)



(Classroom)



5. **Event Lobby (Basement 1)**

The double-volume height of the 700 sqm Event Lobby is conducive for various students' events, and encourages bonding and interaction between students.



Annex 3

Fact Sheet - SMU School of Social Sciences celebrates 15th Anniversary

<https://socsc.smu.edu.sg/>

Established on 1 April 2007, the School of Social Sciences (SOSS) set out to offer students a holistic and integrative approach to the study of social issues. The School offers its students a curriculum with unrivalled versatility that will keep them relevant.

SOSS offers four primary majors – Psychology, Political Science, Sociology, and PLE (Politics, Law and Economics), and three second majors – Global Asia, Public Policy and Public Management, and Arts and Culture Management. The curriculum is rigorous, yet flexible and students may choose to focus on a single discipline or broaden their perspectives by reading one of the many second majors offered by SMU’s other schools, or even pursue a double degree.

From an inaugural intake of 76 Bachelor of Social Science students in 2004 and 10 faculty members, SOSS is now home to more than 800 undergraduate and postgraduate students and 40 faculty members. Over the last 15 years, the School has nurtured over 2,500 graduates from its undergraduate and postgraduate programmes.

The School has produced many notable alumni. They include:

- Five-time Paralympic gold medallist, Yip Pin Xiu;
- SEA Games gold medalist in Men’s Water Polo, Yip Yang;
- Entrepreneur Farhan Firdaus who co-founded Meet Ventures – a venture builder and start-up advisory firm who was recently recognised by the European Commission as a EUVP Young Leader and awarded the Free-Market Humanitarian Award by the UK Trade Board;
- Social entrepreneur Vanessa Paranjothy, who founded Freedom Cups, a feminine hygiene company operating on a “buy one, give one” model that provides women in underserved communities with menstrual cups;
- Social entrepreneur Matt Oon Tian Sern, who in 2015 founded Acceset, an online platform where people can discuss mental health issues and seek help anonymously. His efforts were recognised in 2018 when he received the Queen’s Young Leader Award.

In terms of research areas, its faculty covers a wide range of topics such as subjective well-being, international migration, social networks, ageing, nation building, and comparative politics. Over the coming five to 10 years the School aims to strengthen its research profile in two major areas. The first is in the study of Southeast Asia from a social science perspective and the School aims to become a significant centre for research that will attract social scientists interested in this region. The second is the area of Sustainable Governance and it aims to develop a substantial interdisciplinary research programme in sustainable governance that will also supply the foundations for undergraduate and graduate teaching related to this larger question.

In addition, it houses the Lien Centre for Social Innovation which offers thought leadership, evidence-to-action translational research, and capacity-building programmes to professionals and youths in Singapore and beyond, as well as the Centre for Research on Successful Ageing (ROSA) which seeks to understand the well-being of older adults holistically and promote successful ageing in Singapore.

These are some of the milestones / key achievements of SOSS in the last 15 years:

- 2004 – Launch of the **Bachelor of Social Science (BSocSc)** programme. All BSocSc students have the benefit of being able to choose to read a second major from any of the six schools in SMU. The BSocSc programme has undergone several rounds of curriculum revision since 2006 to provide greater flexibility and sharpen its relevance to the changing world.

- 2010 – Launch of the **PhD in Psychology** programme that is designed to equip students with doctoral-level knowledge in research methodology and substantive content knowledge in psychology, with a focus on areas in social, evolutionary, cultural, personality, cognitive, developmental and organisational psychology.
- 2012- 2013 - Launched three new multidisciplinary second majors – **Public Policy and Public Management (PPPM)**, **Global Asia (GA)**, and **Arts and Culture Management (ACM)**. These undergraduate majors allow students to combine theory with practice, by providing opportunities for students to interact and learn from both academics and practitioners. PPPM was also the first such major to be offered at the undergraduate level in Singapore.
- 2016 – Launch of a new primary undergraduate major in **Politics, Law and Economics (PLE)**. This specialisation provides a rigorous and interdisciplinary major between the three related fields of Politics, Law and Economics. It aims to prepare future leaders and thinkers with a deep understanding of global political and economic transformations and the legal frameworks and contexts within which such changes take place. Students will hone strategic and analytical thinking skills and seek innovative solutions to real world problems.
- 2017 – The School commemorated its 10th anniversary and introduced the **Fast-track Master of Philosophy in Psychology**, a two-year programme targeting Year 4 SMU undergraduates who are interested in developing research knowledge and skills to further their studies in Psychology and related fields. The programme enables students to earn a master’s degree within one year after graduation.
- 2022 – SOSS commemorates its 15th anniversary and relocates to a brand-new building at 10 Canning Rise. It also introduces a **new track in Sustainable Futures** under the Politics, Law and Economics (PLE) major that will allow students to engage with climate change and other environmental issues, as well as explore the potential and impact of new technologies, and their implications not only for the sustainability of our physical environment but also the sustainability of human civilizations. (The other tracks are: (i) Choice and Behaviour; (ii) Global Studies; (iii) Public Policy and Governance; and (iv) Distribution and Justice.)

Annex 4

Fact sheet - About SMU College of Integrative Studies

<https://cis.smu.edu.sg/>

Established in 2022, the College of Integrative Studies (CIS) is SMU's seventh School and plays a pivotal role in helping students traverse and integrate the disciplinary areas associated with the other SMU Schools – Accountancy, Business, Economics, Computing, Law and Social Sciences.

The CIS will take individualised learning to the next level and is a strategic element of the University's [Vision 2025](#) of growing impact and transforming education. The CIS is different in that it emphasises the importance of integrating ideas and perspectives across disciplines to derive new solutions in emerging areas, particularly those related to SMU's three priority areas of Digital Transformation, Growth in Asia, and Sustainable Living.

The CIS aims to nurture graduates who will confidently navigate the inter-related issues of a complex world, find solutions beyond a single discipline or traditional paradigm, and contribute to industry and society in meaningful ways.

- **What the College offers to students**

The CIS oversees the SMU Core Curriculum, and three undergraduate programmes: a deferred declaration of degree, an Individualised Major culminating in a Bachelors of Integrative Studies, and an Individualised Second Major. At the postgraduate level, the CIS offers two postgraduate programmes (a MPhil and a PhD) in Asian Urbanisms, taking a consciously interdisciplinary approach.

The College also houses the Wee Kim Wee Centre, and manages SMU's Residential Living and Learning initiatives, including the Prinsep Street Residences and its programmes.

- **The College's Deferred Declaration of Degree (D3) Programme**

The Deferred Declaration of Degree is a one-year introduction to the different degree programme that SMU has to offer. Students enjoy the flexibility to explore their intellectual interests and talents via Core Curriculum courses, as well as disciplinary courses from other SMU Schools.

Students will also participate in regular forums and discussions featuring industry leaders and alumni to better understand the latest trends across sectors, as they consider their degree interests and potential career choices.

By the end of their first year, students on the programme may apply to pursue the Individualised Major offered by the CIS, or any of the other SMU undergraduate programmes. The CIS will work closely with the Schools to pre-screen students during admissions to facilitate these deferred degree declarations.

- **The College's Individualised Major**

The CIS is the only institution in Singapore offering students an Individualised Major, allowing students to build a major from selections across the University's entire suite of courses. There will be two tracks in this major - professional, and research. The professional track will be more immersed in industry topics and experience, while the research track will be more focussed on research and analysis and suited for students who wish to embark on a policy-making or academic career. Each student will be assigned a faculty advisor, and, for those on the professional track, an

industry mentor as well, to guide them in customising and designing their major according to their strengths as well as the evolving needs of industry and society.

Students will graduate with a Bachelor of Integrative Studies degree upon successful completion of the degree requirements, inclusive of the first year under the D3 programme. With this, CIS provides an avenue for students to configure their own unique path that is aligned with their educational background, current interests and future ambitions.

The Individualised Second Major offers students who are not in the Bachelor of Integrative Studies programme an opportunity to undertake an interdisciplinary secondary major. Students have the option of choosing either a professional or research track, just like with the Individualised Major. As per the Individualised Major, all students enrolled in the Individualised Second Major, regardless of track, will be assigned a faculty advisor. Together with their faculty advisors, students will draw up a study plan indicating the proposed title and theme of their major, and secure approval of their coursework and capstone project/dissertation topic.

- **Teaching faculty of the College**

The CIS faculty of around two dozen respected scholar-teachers come from a variety of disciplinary backgrounds and are renowned for cutting-edge interdisciplinary research. They include colleagues with expertise in computer science, economics, environmental science, history, geography, law, literature, and political science; many of whom work across disciplines and are experts in some of the biggest challenges and opportunities for Singapore and Asia's future. In time, the CIS anticipates an even more diverse faculty with interests that intersect with and complement the expertise of our faculty in SMU's six Schools.

- **The College's first student intake**

The CIS will welcome its first intake of up to 100 students in Academic Year 2023/24.

Existing SMU students who are keen on the CIS academic offerings may apply to enrol in the Individualised Second Major, where they can design a second major to complement or supplement their primary degree. The first cohort of students on the second major have started their programmes in AY2022/23.
