

CELEBRATING SMU25 AND SG60

OFFICE OF STUDENT LIFE
presents

SMU
ARTS
FEST

  [smuartsfest](https://www.smuartsfest.com)

22 AUG
28 SEP
25



smu.sg/artsfest



This year's theme for the fest is “2560”. It is especially meaningful that SMU's 25th anniversary coincides with Singapore's 60th birthday.

This shared milestone year presents a rare and powerful moment to reflect on how our institution and our nation have grown together: bold, young, and forward-looking, and to celebrate the spirit of innovation, resilience, and community that defines both SMU and Singapore.



ABOUT

SMU Arts Fest takes centre stage once again, commemorating two major milestones — SMU's 25th anniversary and Singapore's 60th birthday.

These celebrations inspire this year's festival theme, **2560**. The "25" honours SMU's vibrant journey—its bold beginnings, youthful spirit, and forward-looking aspirations. The "60" pays tribute to Singapore's resilience, cultural richness, and emergence as a dynamic global city. Together, **2560** bridges tradition and innovation, connecting past achievements with the promise of the future.

Building on this theme, the festival's diverse programmes spotlight youth talent and features homegrown stories and conversations, inviting audiences into a shared experience that is both personal and collective, nostalgic yet refreshingly new.



FESTIVAL CALENDAR (22 Aug – 28 Sep)

Week 1 22 - 23 Aug	Week 2 29 – 30 Aug	Week 3 5 – 6 Sep	Week 4 11 – 13 Sep	Week 5 20 – 21 Sep	Week 6 26 – 28 Sep
25 x 25 Visual and Literary Arts 22 Aug – 6 Sep SMU Campus Green & De Suantio Gallery				return of RE:TURN Dance 20 Sep Drama Centre Theatre	
	Live, Laugh, Lor AFxSNF collaboration 29 & 30 Aug 5 & 6 Sep SMU Campus Green				MAD THE MUSICAL 26, 27, 28 Sep Drama Centre Theatre
			COMMISSION Music 11 Sep SOTA Concert Hall		

KEY PROGRAMME HIGHLIGHTS

First-ever multi-university youth showcase on one stage

- First time bringing together youth talents from ALL Singapore universities on one stage
- 8 unis: SMU, NUS, NTU, SUSS, SUTD, SIT, UAS and SIM
- Collaborative piece including a penta-university street dance item!

Continued anchor partnership with Singapore Night Festival

- Third consecutive year that we are partnering with Singapore Night Festival in such a big way as festival anchor to bring youth-centric entertainment / placemaking to the precinct.

SMU's first original musical to mark SMU25

- Co-created with top local theatre practitioners such as George Chan, Jo Tan and Andy Benjamin Cai, based on a little-known history of our grounds.
- Featuring 4 original songs written by Jimmy Ye.
- The cast will feature undergrads, alumni, and staff!
- SMU has staged *Honk* and *Just So* in 2009 and 2010 respectively, but those are not original/local.

Number of students and CCA clubs involved:

- 300 undergrads
- 160 non-SMU youths
- 20 SMU alumni
- 11 SMU Arts Clubs.

PRODUCTION INFO

5 Productions over 6 Weeks

TICKETED

THEATRE + MUSIC

MAD THE MUSICAL

Time-Bending • Heartfelt
• Toe-Tapping



26, 27,
28 SEP

- 🕒 26 & 27 Sep, 8pm
28 Sep, 3pm
- 📍 Drama Centre Theatre
- 🎫 \$25

A playful, original musical celebrating SMU25, brought to life through reimagined pop hits and a rare collaboration between SMU and top industry professionals.

DANCE

return of RE:TURN

Fusion • Energetic • Tradition-Reimagined



20 SEP

- 🕒 3pm, 8pm
- 📍 Drama Centre Theatre
- 🎫 \$25

Tradition meets street in this high-energy dance production blending Asian styles with hip-hop.

MUSIC

COMMISSIONS

Original Compositions • Celebratory • Inclusive



11 SEP

- 🕒 8pm
- 📍 SOTA Concert Hall
- 🎫 \$25

A concert spotlighting SMU's legacy of commissioning orchestral works — featuring three world premieres.

FREE ADMISSION

DANCE + MUSIC

Live, Laugh, Lor

Vibrant • Collaborative • Unifying



29, 30 AUG
5, 6 SEP

- 🕒 8pm, 9pm, 10pm
- 📍 SMU Campus Green

All Singapore universities unite in a dynamic 4-night showcase with Singapore Night Festival.

ART EXHIBITION

25 x25

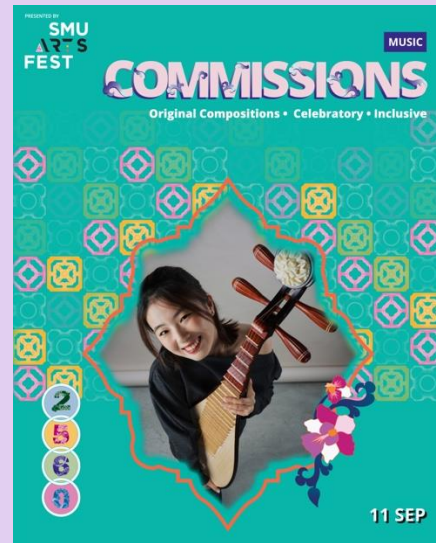
Art Reimagined • Multidisciplinary
• Thought-Provoking



22 AUG
6 SEP

- 🕒 Mon - Thu, 12 - 7pm
Fri & Sat, 12 - 10pm
Sun, Closed
- 📍 SMU de Suantio Gallery
& SMU Campus Green

Artworks created in response to pieces from the SMU Art Collection, in collaboration with SMU Libraries.



Productions Celebrating SMU25

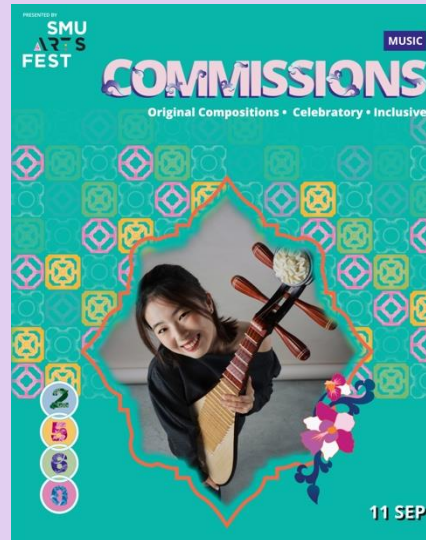


Productions Celebrating SG60

Productions Celebrating SMU25: *Celebrating Lesser Known Stories & Facts about SMU*



- The junction of Bencoolen and Bras Basah was the site of Singapore's first mental asylum back in the 1840s.



- Few commissions are offered to Singaporean composers. SMU has consistently bucked the trend by commissioning and premiering numerous original orchestral works over the past two decades.



- Over the years, SMU has amassed a rich and diverse collection of donated artworks, a reflection of the university's commitment to fostering a culture of creativity and critical thought.



MAD THE MUSICAL

Date: 26 Sep- 28 Sep 2025

Time: Fri – Sat, 8pm | Sun, 3pm

Venue: Drama Centre Theatre

Admission: Ticketed - \$25

Genre: Musical

MAD The Musical follows the journey of a present-day SMU undergraduate whose world collides with the fascinating, storied past of the site where one of our schools now stands.

Expect a playful and heartfelt blend of past and present, brought to life through the reimagining of pop hits by the likes of Taylor Swift, Green Day, and many others.

A rare collaboration between SMU and top industry professionals - including Jo Tan for the original script concept, Jimmy Ye for original songs, George Chan as director, and Andy Cai as choreographer - MAD is an original musical created to celebrate SMU's 25th anniversary.

PRESENTED BY
SMU
ARTS
FEST

THEATRE • MUSIC

MAD

THE MUSICAL

Time-Bending • Heartfelt
• Toe-Tapping



2
5
6
0

26, 27,
28 SEP

COLLABORATION WITH INDUSTRY PROFESSIONALS

MAD
THE MUSICAL

Directed by
GEORGE CHAN

Theatre director, choreographer,
singer, and actor



MAD
THE MUSICAL

Original Songs by
(Copyright Warner Chappell Music)
JIMMY YE

Singer-Songwriter, Composer
Director, SMU Office of Student Life



MAD
THE MUSICAL

Original script concept by
JO TAN

Award-winning playwright, and
actress for stage and screen



MAD
THE MUSICAL

Choreography by
ANDY BENJAMIN CAI

Choreographer in musical theatre
and NDP, educator, and dancer





SPOTLIGHT ON OUR SMU CAST



Melody Ng

Currently in her second year at SMU's School of Law, Melody has pursued theatre consistently since her O and A Level days, even studying Theatre Studies formally. From her first lead role as Annie in *Annie the Musical* to now playing Isabel in *MAD: The Musical*, Melody brings years of performance experience and a deep love for the stage.



Michaela Leong

A graduate from the School of Social Sciences, Michaela is a seasoned theatre performer with training from Wild Rice's *Young & Wild* program and Singapore Repertory Theatre's *The Young Company* under Daniel Jenkins. Her recent stage credits include *MERDEKA / 獨立 / சுதந்திரம்* (Wild Rice), *After Life* (SRT), *Dungeons & Distractions*, *Love & Information*, and *People* (SMU Stagelt).



SPOTLIGHT ON OUR SMU CAST



Shayanne Chang

An alumna of the Lee Kong Chian School of Business, Shayanne blends her strong theatre background with a flair for contemporary storytelling. Her recent work includes hosting the MYMCA *Youth Got It* Mental Health Symposium (2024), and performing in *Gameplay: Dungeons & Distractions* (SMU Arts Festival, 2024) and *Love & Information* (SMU Arts Festival, 2023).



Lennel Chua

A Year 2 student from the School of Computing and Information Systems, Lennel is a passionate vocalist and active member of SMU VOIX, the university's a cappella group. He performed in the club's March showcase and made his theatrical debut as the lead male missionary in Bethesda Bedok Tampines Church's original production. Lennel also shares his love for music through singing videos on Instagram.



COMMISSIONS

Date: 11 Sep 2025

Time: 8pm | 75 min

Venue: SOTA Concert Hall

Admission: Ticketed - \$25

Genre: Chinese Orchestra

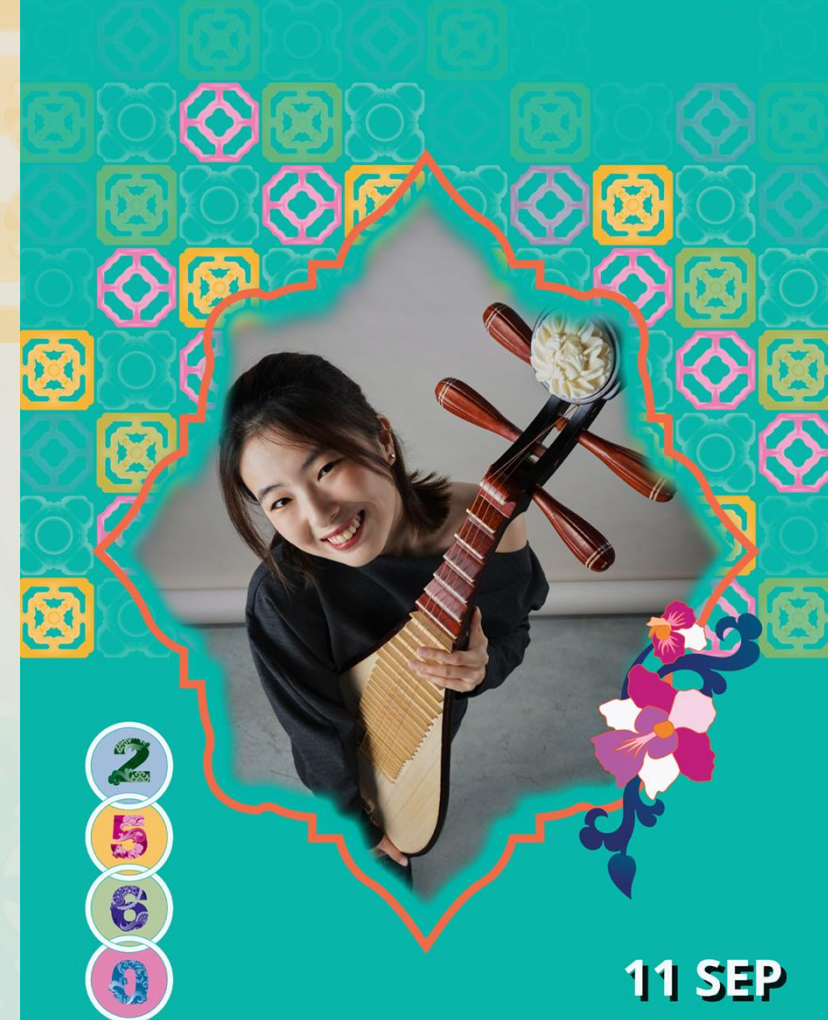
SMU has consistently supported local talent by commissioning new orchestral compositions. To celebrate SMU25 and SG60, the SMU Chinese Orchestra will present a special concert featuring commissioned works from past years alongside multicultural pieces celebrating Singapore's rich diversity. The programme includes three world premieres of original commissions and guest players, underscoring SMU's commitment to inclusion.

PRESENTED BY
**SMU
ARTS
FEST**

MUSIC

COMMISSIONS

Original Compositions • Celebratory • Inclusive



COMMISSIONS

- **Featuring 3 world premieres of commissioned original works**
 - Cultural Medallion recipient and renowned composer, Eric Watson
 - Emerging local talent, Germaine Goh
 - Established composer, Sulwyn Lok
- **Artistic Direction by Mr Quek Ling Kiong**, Principal Conductor of the Singapore Chinese Orchestra (SCO)
- **Cross-cultural showcase of Southeast Asia's iconic instruments** including:
 - Vietnam's *đàn bầu*
 - Thailand's *khong wong yai*
 - Indonesia's *angklung*

These instruments symbolically represent SMU's three overseas centres in Ho Chi Minh City, Bangkok, and Jakarta.
- **Community collaboration with The Purple Symphony**, Singapore's largest inclusive orchestra, celebrating diversity and accessibility in the arts.



25 X 25

Date: 22 Aug – 6 Sep 2025

Time: Mon – Thu, 12pm – 7pm | Fri & Sat, 12pm – 10pm | Sun, Closed

Venue: SMU de Suantio Gallery & Campus Green

Admission: Free

Genre: Multidisciplinary Art Exhibition

Curator: Kamiliah (SMU Libraries)

Artists: SMU Artists (for Exhibition) and Creative Agency (for Installation)

This year's exhibition spotlights a new wave of student creativity, featuring visual and literary responses to 25 works from the SMU Art Collection.

Curated in collaboration with SMU Libraries, it invites cross-medium dialogue and fresh interpretations of the themes explored in the original artworks.

PRESENTED BY
**SMU
ARTS
FEST**

ART EXHIBITION

25 x25

Art Reimagined • Multidisciplinary
• Thought-Provoking



**22 AUG
6 SEP**

Installation



This installation responds to *Bright Idea* through a playful exploration of perspective, illusion, and the generative power of ideas.

Comprising five layered outlines of a lightbulb arranged at progressive heights, the piece invites audiences to walk through and around it. From most angles, the forms appear abstract or fragmented—but from a specific viewpoint, the layers align into a single radiant bulb.

The work reflects how bright ideas take shape: layered, multidimensional, and often only coming into focus when seen from the right angle. Each outline represents a spark and together forming something larger, more luminous.

The installation echoes the forward-looking spirit of the university where ideas, like people, grow stronger when seen from different perspectives.



Live, Laugh, Lor

Date: 29 & 30 Aug, 5 & 6 Sep 2025 | Fri & Sat

Time: 8pm, 9pm, 10pm | 30 min

Venue: SMU Campus Green

Admission: Free

Genre: Music & Dance

Live, Laugh, Lor is a vibrant 4-night music and dance showcase, presented in collaboration with the Singapore Night Festival—and for the first time ever, uniting all Singapore universities on one stage.

Audiences can look forward to a dynamic line-up of collaborative performances, including a five-university dance ensemble and a three-institution acapella act, celebrating the diverse and evolving expressions of contemporary Singaporean identity.



Vibrant • Collaborative • Unifying



Collab with Singapore Night Festival



- Third consecutive year partnering with Singapore Night Festival. Heritage.SG is the new key partner, taking over from the Singapore Heritage Board.
- Includes **programming four nights** of activities over **two weekends**, including curating the **popular Festival Food Village**.
- Marks SMU Arts Fest's evolution into a **significant contributor to Singapore's national arts calendar**, extending our campus presence into the wider Bras Basah.Bugis arts belt.
- Builds on our growing reputation as a **hub for emerging talent and youth engagement** in the heart of the city.
- Offers SMU students a unique opportunity for **real-world arts management experience** through festival planning, programming, and on-ground execution.

Return of RE:TURN

Date: 20 Sep 2025

Time: 3pm, 8pm

Venue: Drama Centre Theatre

Admission: Ticketed - \$25

Genre: Dance

Return of RE:TURN is a high energy dance production that explores the disappearing grammar of traditional Malay, Indian and Chinese dance finding its way to influence, evolve and turn dance genres like hip-hop into fresh and exciting possibilities. Featuring the largest dance club, this production celebrates SMU Eurhythmix marking its 25th anniversary alongside SMU25 and SG60.

DANCE

return of RE:TURN

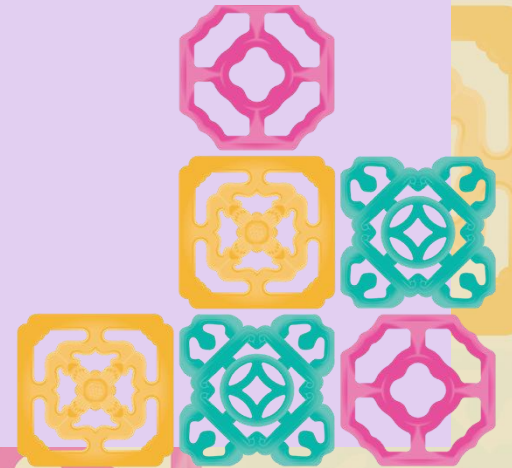
Fusion • Energetic • Tradition-Reimagined



20 SEP



FESTIVAL OPENING NIGHT 29 Aug



Programme Outline

Date: 29 August 2025, Friday

Time: 7pm – 9pm

Location: SMUSA Hub > Campus Green > de Suantio Gallery

Guests Demographics: SMU Senior Mgmt, Presidents and Chairman from 7 other universities, AF25 collaborators and partners.

Programme Outline

7:00pm: Light Refreshments and Networking

7.45pm: Introduction and Welcome address by Prof Lily

8:00pm: Singapore Night Festival x SMU Arts Fest Performance: Live, Laugh, Lor, featuring students from all of Singapore's universities

8.30pm: Multi-disciplinary exhibition "25x25", featuring student artworks in response to SMU's Art Collection

9:00pm: End of programme

ADDITIONAL INFO

Exclusive Artsy SMOO Pin

<https://smu25.smu.edu.sg/activities/smoo-pin-collectors-hub>



Artsy SMOO Pin is one of 16 collectibles as part of the SMU25 Pins collectibles that encourage conversations and engagement amongst the SMU Community – Students, Staff/Faculty and Alumni.

Get the exclusive Artsy SMOO pin when you attend SMU Arts Fest!

Useful Links

Scan our Linktree:



<https://linktr.ee/smuartsfest>

❑ **AF25 Ticket Platform:**
<https://smuartsfest.bigtx.io>

❑ **Visit SMU Arts Fest Website**
(live from 4 Aug onwards)
<https://artsfest.smu.edu.sg/>

❑ **Follow us on IG & FB:**
[@smuartsfest](#)