

Fact Sheet – SMU Campus Development Project to ease space crunch and add buzz to Bras Basah District

Background

- In May 2015, SMU announced that it will embark on a two-year \$20 million development project that will not only add new and much-needed additional learning, teaching and group study spaces to its current campus in the city, but also transform the landscape of the Civic District by injecting energy, zing and activities to the SMU Campus Green.
- Work started since August 2015, and with Phase 1 of the project now being completed, many new facilities will be opened to SMU students from the start of the new Academic Year on Monday, 15 August 2016.

New facilities completed

- At the School of Social Sciences/School of Economics building, by reconfiguring existing space in the basement concourse, we have created two 70-seater horseshoe-shaped seminar rooms. These add to the range of seminar rooms currently available at SMU, and enable us to cater to larger classes for popular modules, and for postgraduate programmes.
- By reconfiguring the basement concourse walk-way and creating new floor space on the ground level (previously an air-well), several student study lounges have been added on the ground and basement levels. We have adopted a student-centric approach and incorporated student feedback in the design of these student study lounges. For example, there are many white walls on which students can use as writing surfaces when they do group discussions, the study areas also offer a variety of comfortable furniture and seating types (group-seating, individual pods, high and low seating). The new study lounges are air-conditioned for comfort, offer a quieter and more conducive study environment, and are exclusively for use by SMU students.
- Altogether, the seminar rooms and study lounges contribute to an increase of more than 500 seats and 1107 sqm to cater to increasing demand by the SMU community.
- The SMU Fitness Centre has also been expanded by 50 per cent (overall floor area is now 1,010 sqm). The new facility, comprising two fitness studios and one gymnasium, spans three levels and is disability-friendly.
 - The expanded floor area has allowed the SMU Office of Student Life to introduce new and a larger range of fitness and training equipment to encourage a wider genre of users to the Centre. Specialised equipment acquired will also strengthen SMU's training of the University's high-performance athletes.
 - Moreover, the glass façade of the gymnasium on the top level will offer students an enhanced user experience as they will look out to the lush greenery and vibrant activities on Campus Green (when Campus Green works are completed).

To be ready in 2017

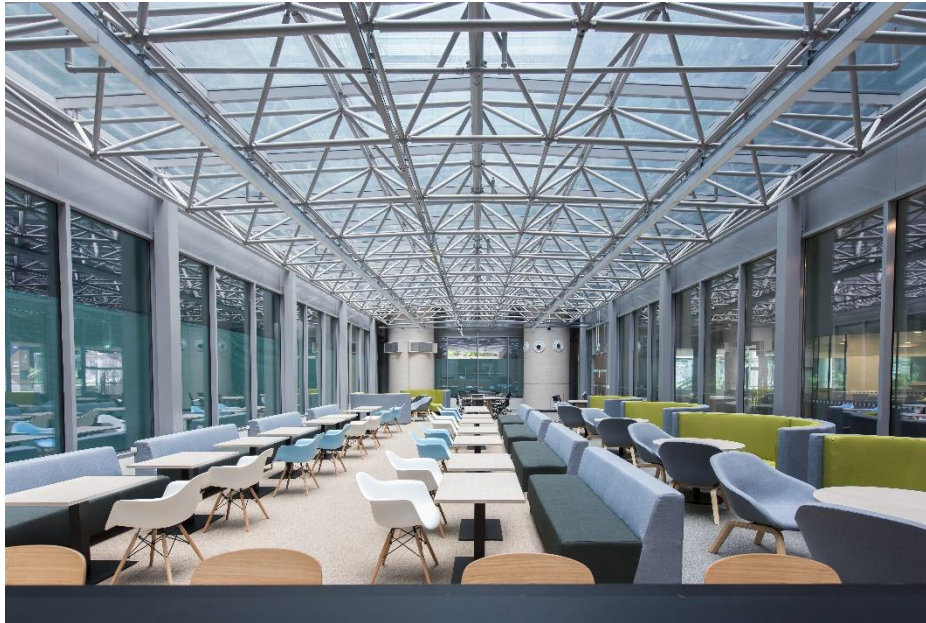
- In the next phase of the project, a 75-seater seminar room, a 45-seater flat classroom, four 50-seater flexible-configuration flat classrooms, and more student study lounges will be built. These new teaching spaces will further expand our range of teaching spaces. These spaces will further add 437 seats (686 sqm) to ease the space crunch.

- A 280-seater open-air Amphitheatre will also be ready by the first quarter of 2017. This new feature, slated to be a platform for our students to engage with the community and express themselves artistically, will host small, semi-formal or casual performances of all kinds. This will also be a prominent platform whereby SMU can encourage more stakeholders in the community to come and enjoy the lush greenery on Campus Green with us.
- A new CCA space with a glass frontage overlooking the open-air Amphitheatre and the Campus Green/Bodhi tree will also be created to bring students from various CCAs together into one common space. It will also be a space for smaller scale events and activities to engage students, staff, faculty and even members of the public. This CCA area will encompass an SMU Students' Association Business Centre, where the SMU Student's Association (SMUSA) can be closer to their student peers, and have more opportunities to engage with and garner feedback from them.

Images of new facilities

- New student study lounges at ground level of School of Social Sciences/School of Economics building





- New student study lounges at basement concourse of School of Social Sciences/School of Economics building:

